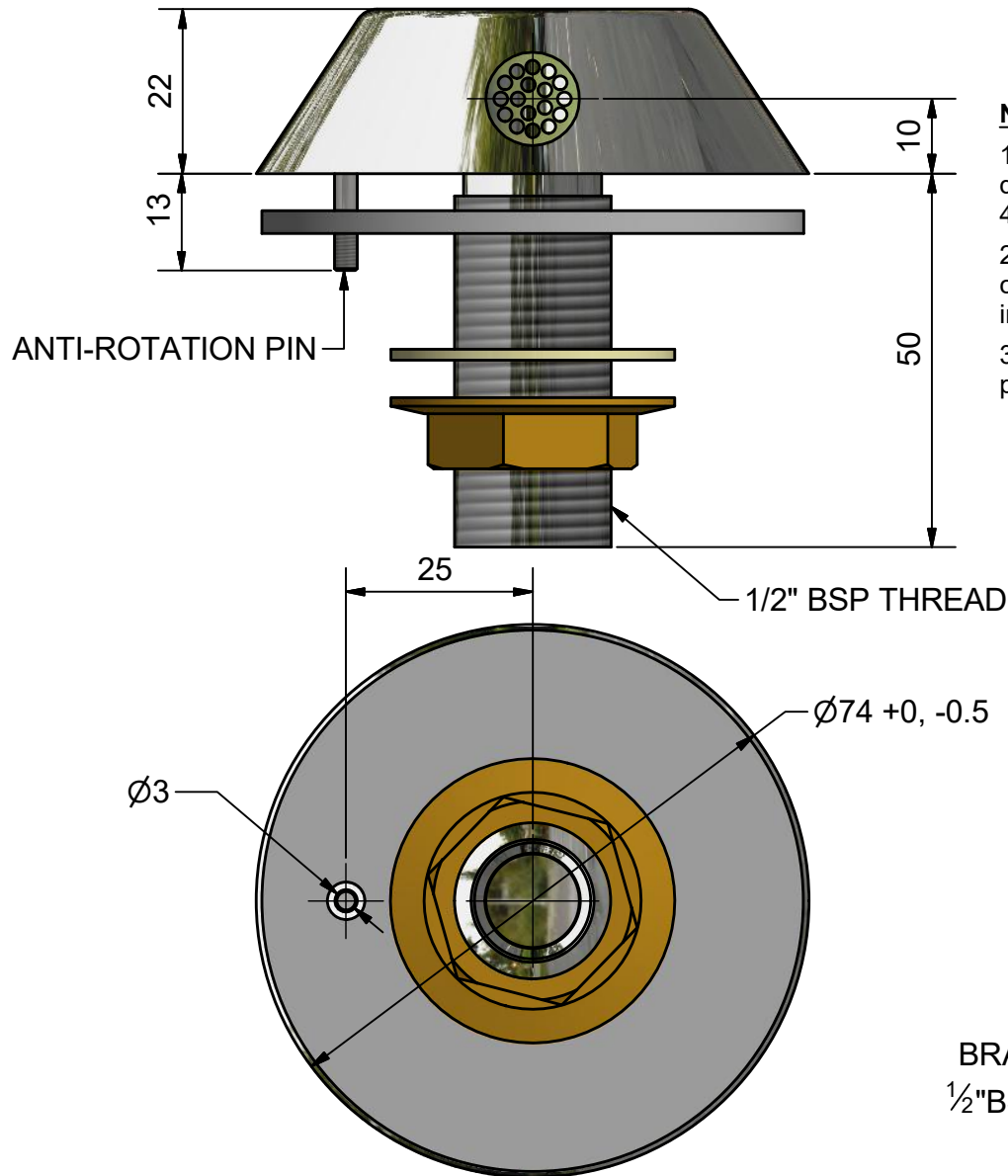


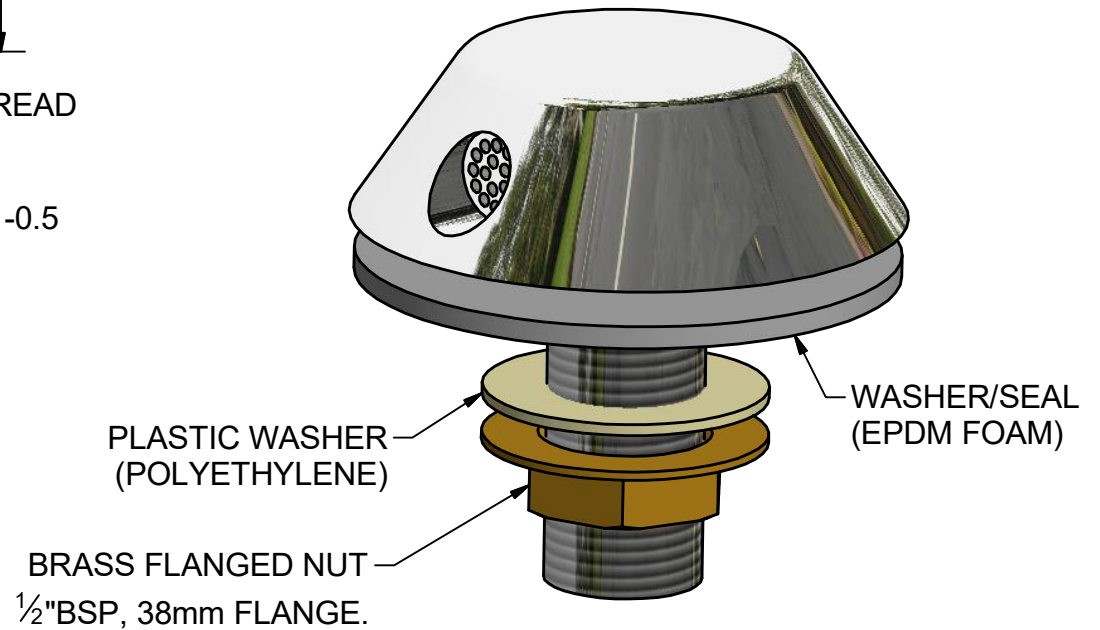
REVISION HISTORY

REV	DATE	DESCRIPTION	BY	CHKD
4	09/08/2016	NOTE 2 & SHEET 2 ADDED	RD	DB



Notes:

1. When used in conjunction with Wallgate basins & water controls, to ensure the water distribution from the nozzles is retained within the basin bowl, the flow rate is regulated to 4lpm. contact Wallgate sales for additional product information.
2. **IMPORTANT!** The cold water supply must be fitted with a double check valve (dcv) to comply with backflow prevention requirements, contact wallgate sales for further information.
3. Refer to sheet 2 for a typical installation example & dimensions for water spout projection.



© 2013 Copyright THIS DRAWING IS THE PROPERTY OF WALLGATE LIMITED AND IS ISSUED ON THE STRICT UNDERSTANDING THAT THE INFORMATION CONTAINED WILL NOT BE REPRODUCED, COPIED OR USED WITHOUT PRIOR AGREEMENT OF WALLGATE LTD.



TITLE: WATER NOZZLE.

Drg No: GA_BWN003

Model/Client/Project: SHEET 1 OF 2

MATERIAL: 304 STAINLESS STEEL (NOZZLE).

FINISH:

Limits: (unless stated)
 ± 0.25mm (sheetmetal)
 ± 0.10mm (machined)
 ± 2.00mm (pattern)
 ± 5.00mm (moulded)

All dimensions in mm, All angles 90° (unless stated)

Scale: 1:1

A4 3rd

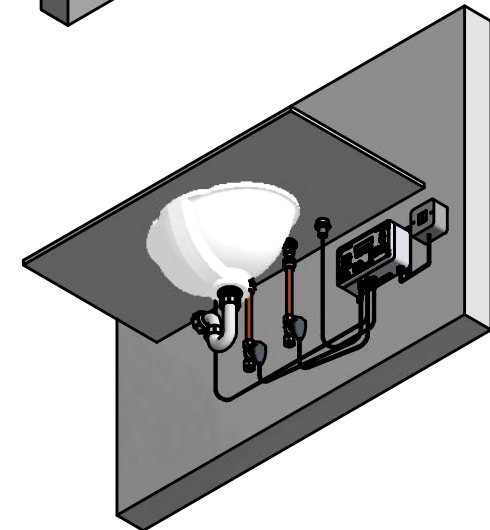
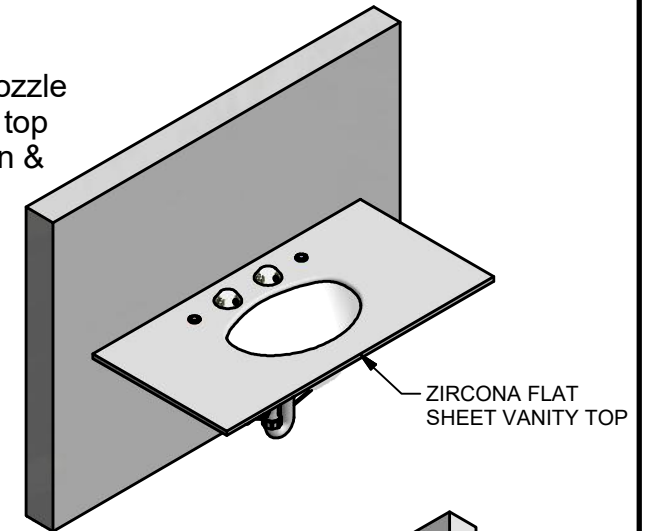
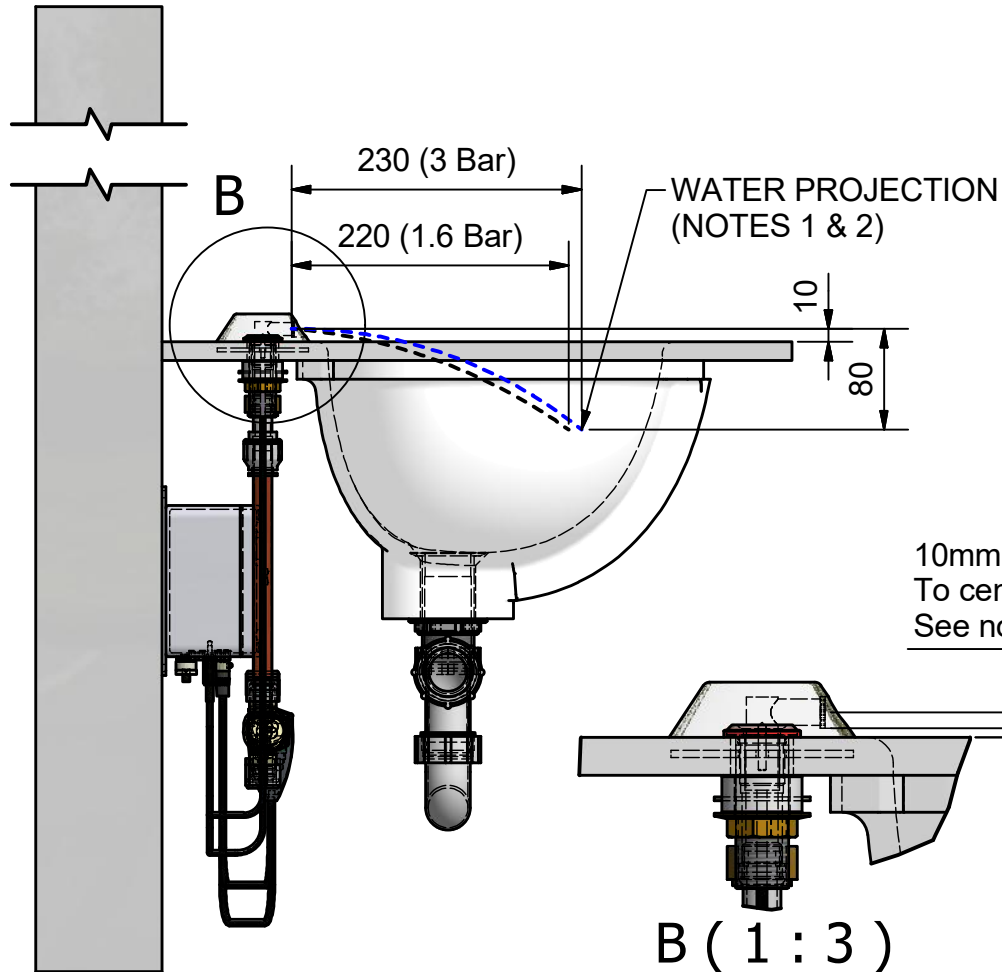
Notes:

1. Water pressure: 3 Bar dynamic (Max), 1.6 Bar dynamic (Min).
2. Water projection from nozzle is shown on drawing view below & is calculated using a Wallgate water solenoid valve pack (P/No WVPV400) fitted with a 4lpm flow regulator.
3. The nozzle must be fitted flush to the basin top, there must not be any obstruction in front of the nozzle that may clash with the water spout. Drop in basins that do not fit flush to the finished vanity top surface may not be suitable for use with this tap.

REVISION HISTORY

REV	DATE	DESCRIPTION	BY	CHKD
4	09/08/2016	NOTE 2 & SHEET 2 ADDED	RD	DB

Typical example of installation of water nozzle using Wallgate vanity top with undermount basin & water controls.



© 2013 Copyright THIS DRAWING IS THE PROPERTY OF WALLGATE LIMITED AND IS ISSUED ON THE STRICT UNDERSTANDING THAT THE INFORMATION CONTAINED WILL NOT BE REPRODUCED, COPIED OR USED WITHOUT PRIOR AGREEMENT OF WALLGATE LTD.



TITLE: Water nozzle typical installation example.
Drg No: GA_BWN003
 Model/Client/Project: SHEET 2 OF 2

MATERIAL:
FINISH:

Limits: (unless stated)
 ± 0.25mm (sheetmetal)
 ± 0.10mm (machined)
 ± 2.00mm (pattern)
 ± 5.00mm (moulded)

All dimensions in mm,
 All angles 90° (unless stated)
Scale: 1:1
A4 3rd